

IMPACT OF EARLY LIFE DEPRIVATION ON COGNITION

IMPLICATIONS FOR THE EVOLUTIONARY ORIGINS OF THE HUMAN MIND

SESSION I - Chaired by Faraneh Vargha-Khadem


- 1:00 pm** **Ajit Varki, CARTA Co-Director, UC San Diego**
Welcome & Prologue: Royal Experiments on Language Origins
-
- 1:10 pm** **Faraneh Vargha-Khadem, UCL Great Ormond Street Institute of Child Health**
Opening remarks
-
- 1:15 pm** **Douglas K. Candland, Bucknell University**
Feral Children: Two Living Examples and a Little Neurology
-
- 1:35 pm** **Charles A. Nelson III, Harvard Medical School & Boston Children's Hospital**
The Effects of Early Psychosocial Deprivation on Brain-Behavioral Development: Findings from the Bucharest Early Intervention Project
-
- 1:55 pm** **Elissa Newport, Georgetown University**
Maturational Constraints on Learning
-
- 2:15 pm** **Paula Tallal, Salk Institute**
Individual Differences in Language Development and Disorders

SESSION II - Chaired by Paula Tallal

- 2:35 pm** **Faraneh Vargha-Khadem, UCL Great Ormond Street Institute of Child Health**
Developmental Amnesia
-
- 2:55 pm** **25-Minute BREAK**
-
- 3:20 pm** **Danielle Stolzenberg, UC Davis**
Where is My Mother? Uncovering Mechanisms of Neglect in the Maternal Brain

- 3:40 pm** **Marcus Pembrey, University of Bristol**
Deprivation of Nutrition as a Factor in Human Cognitive Evolution
-
- 4:00 pm** **Bruce S. McEwen, Rockefeller University**
The Resilient Brain: Epigenetics, Stress, and the Lifecourse
-
- 4:20 pm** **Ann Masten, University of Minnesota, Twin Cities**
Resilience Processes in Development
-
- 4:40 pm** **Paula Tallal, Salk Institute**
Wrap-up
-
- 4:45 pm** **Question and Answer Session**
-
- 5:25 pm** **Pascal Gagneux, CARTA Associate Director, UC San Diego**
Closing remarks

.....

Have a question for any of today's speakers? Fill out the question card on the back of the program and CARTA Staff will collect throughout the symposium or drop it in the designated boxes in the foyer. Your question may be selected for the Q&A session. 

Thank you for being a part of this CARTA/KIBM Symposium!



CENTER FOR ACADEMIC RESEARCH AND TRAINING IN ANTHROPOGENY
"To explore and explain the origins of the human phenomenon"

THE **KAVLI** Institute for Brain and Mind

UPCOMING CARTA SYMPOSIA

Exploring the Origins of Today's Humans

February 21, 2020

The Evolution of Human Physical Activity

May 15, 2020

FIND US @

carta.anthropogeny.org

f @ ucscdcarta

t @ cartaucsd

Special Thanks

to Our

Multimedia Partners:

Salk Media Services

UCSD-TV

CARTA is a transdisciplinary collaboration between faculty at UC San Diego and the Salk Institute for Biological Studies, along with interested scholars at other academic institutions, whose mission is "to explore and explain the origins of the human phenomenon."

Become a CARTA supporter today!

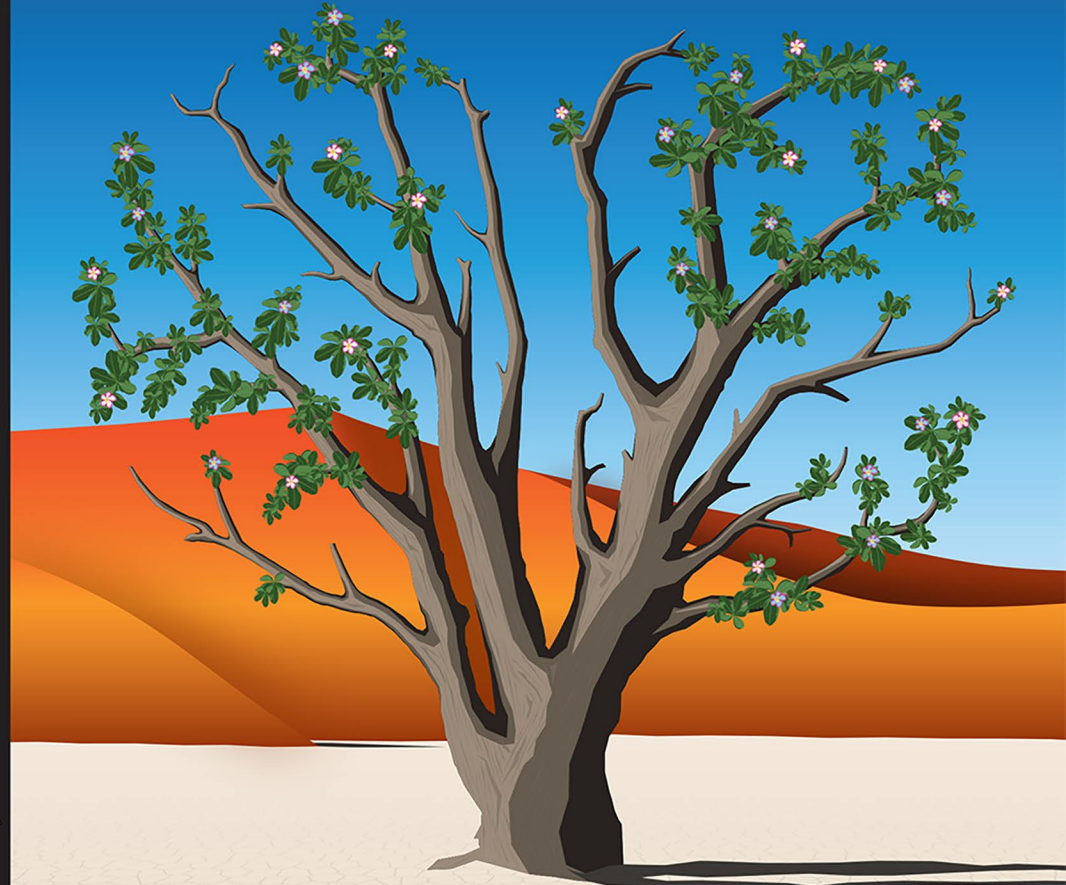
Your contribution ensures that CARTA symposia remain free and available to all.

↳ Detach along perforation

Please write your question here

Speaker to whom your question is directed:

A PUBLIC SYMPOSIUM CO-SPONSORED BY CARTA & KIBM
IMPACT OF EARLY LIFE DEPRIVATION ON COGNITION
IMPLICATIONS FOR THE EVOLUTIONARY ORIGINS OF THE HUMAN MIND



FRIDAY, OCTOBER 11, 2019 • 1:00 - 5:30 PM
CONRAD T. PREBYS AUDITORIUM, SALK INSTITUTE

Co-Chairs

PAULA TALLAL
SALK INSTITUTE

FARANEH VARGHA-KHADEM
UCL GREAT ORMOND STREET INSTITUTE OF CHILD HEALTH



CENTER FOR ACADEMIC RESEARCH AND TRAINING IN ANTHROPOGENY
"To explore and explain the origins of the human phenomenon"

THE KAVLI Institute for Brain and Mind

Special thanks to CARTA'S Supporters
THE G. HAROLD AND LEILA Y. MATHERS FOUNDATION



and many generous friends